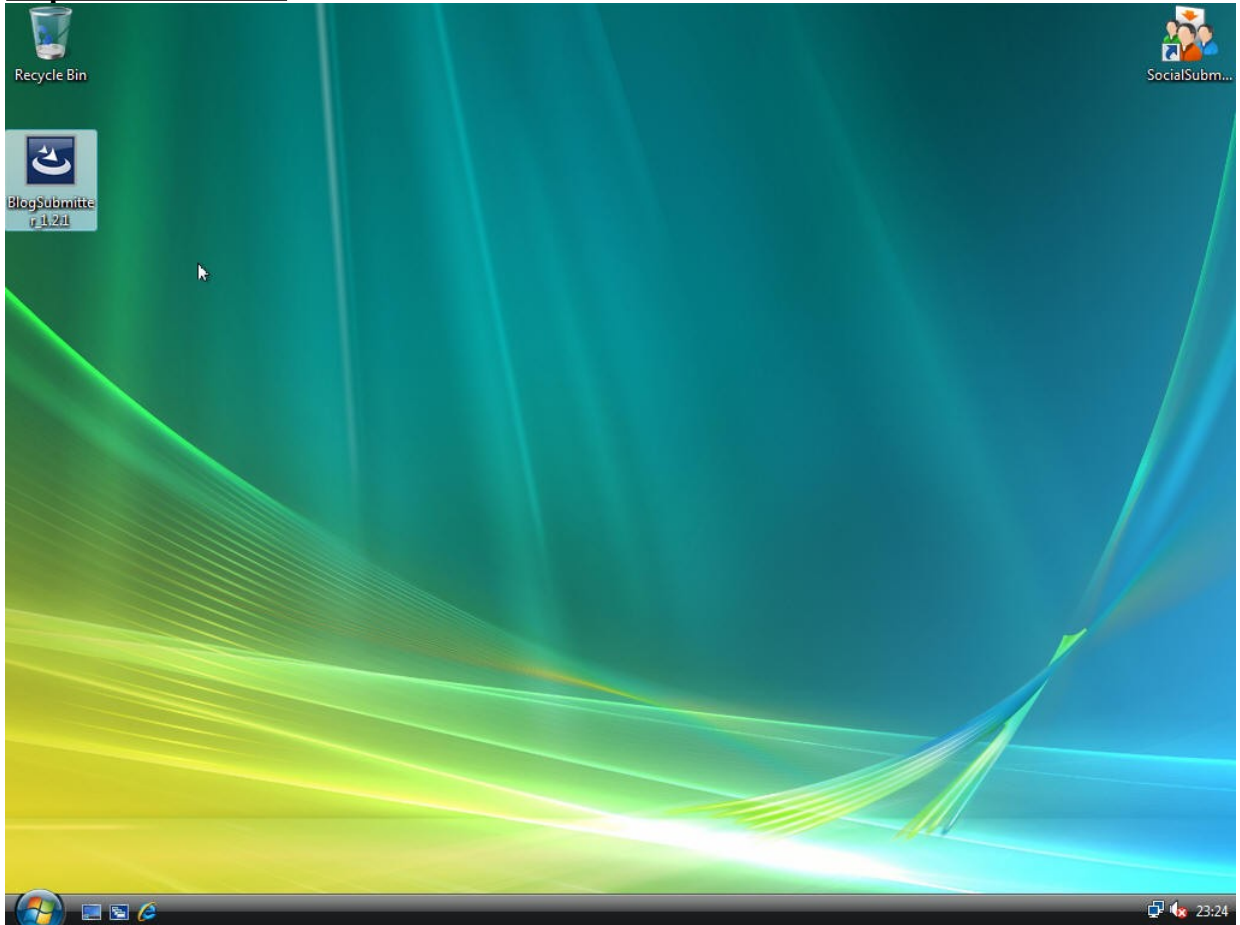


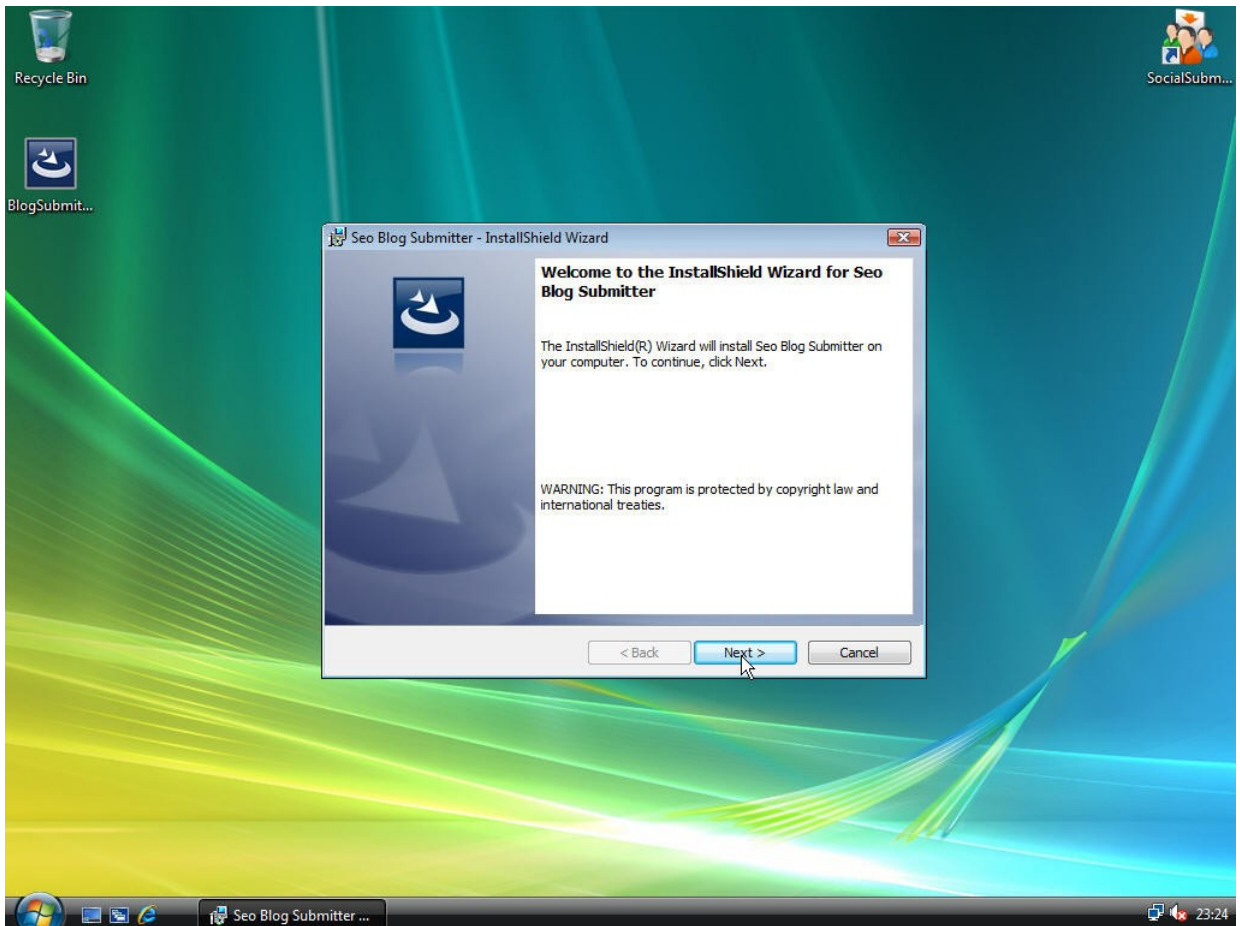
Introduction.

Blog Submitter is a powerful optimization tool which allows you to increase in a “white” way the PR of a specific resource by promoting it through several blogs. BS parses the web to find most relevant blogs according to the input keywords, retrieves additional useful information concerning those blogs (PR status, number of comments, dofollow/nofollow links etc.) and allows you to manually post specific or pre-defined comment to the blogs of your choice. Each optimization project can be saved in a separate complex file, allowing you to keep track of all the keywords, blogs you have posted to and all other project-specific information that might be necessary for future tracking of your post.

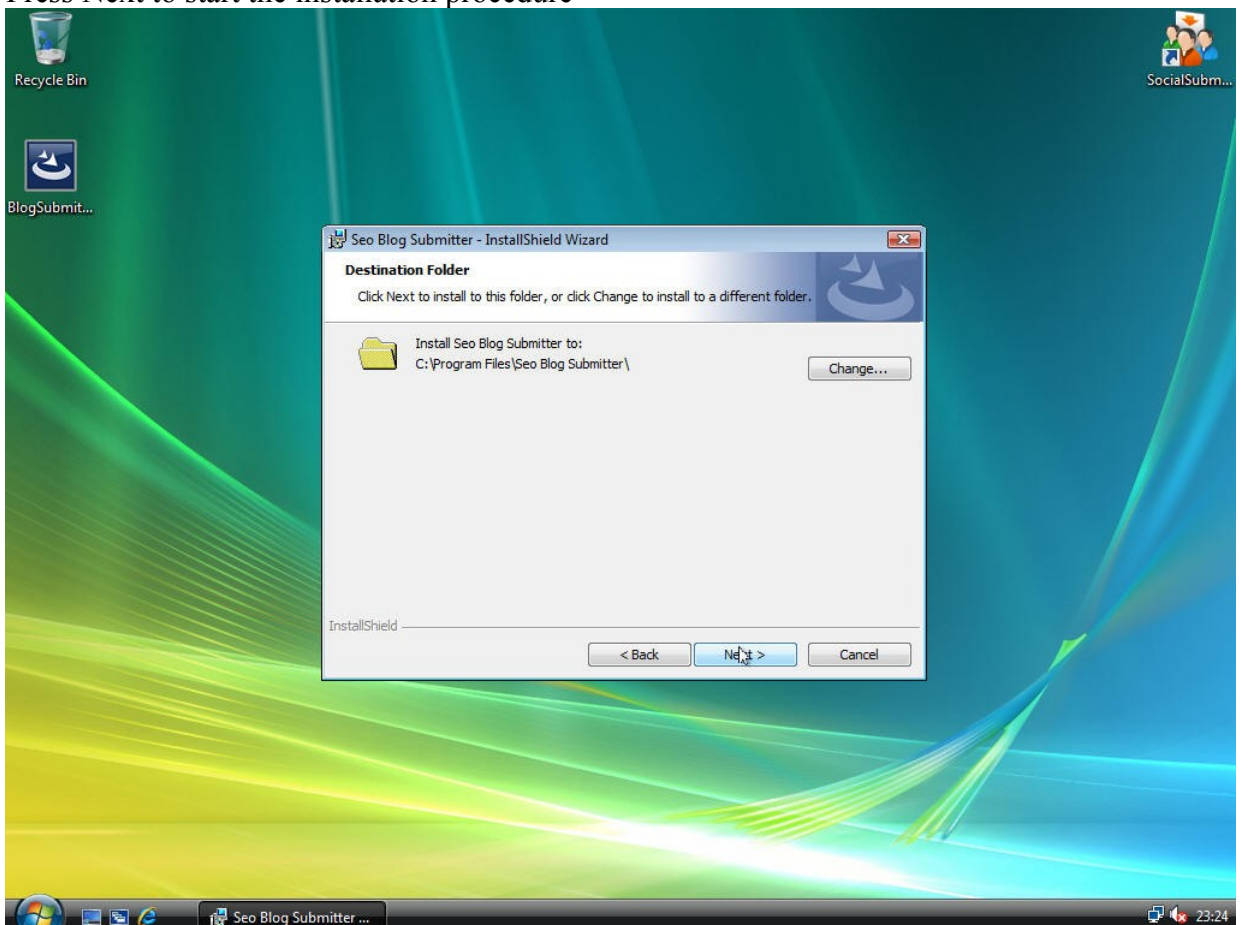
Step 1 – Installation



Double-click the file after you have downloaded it from the Internet to run the installer

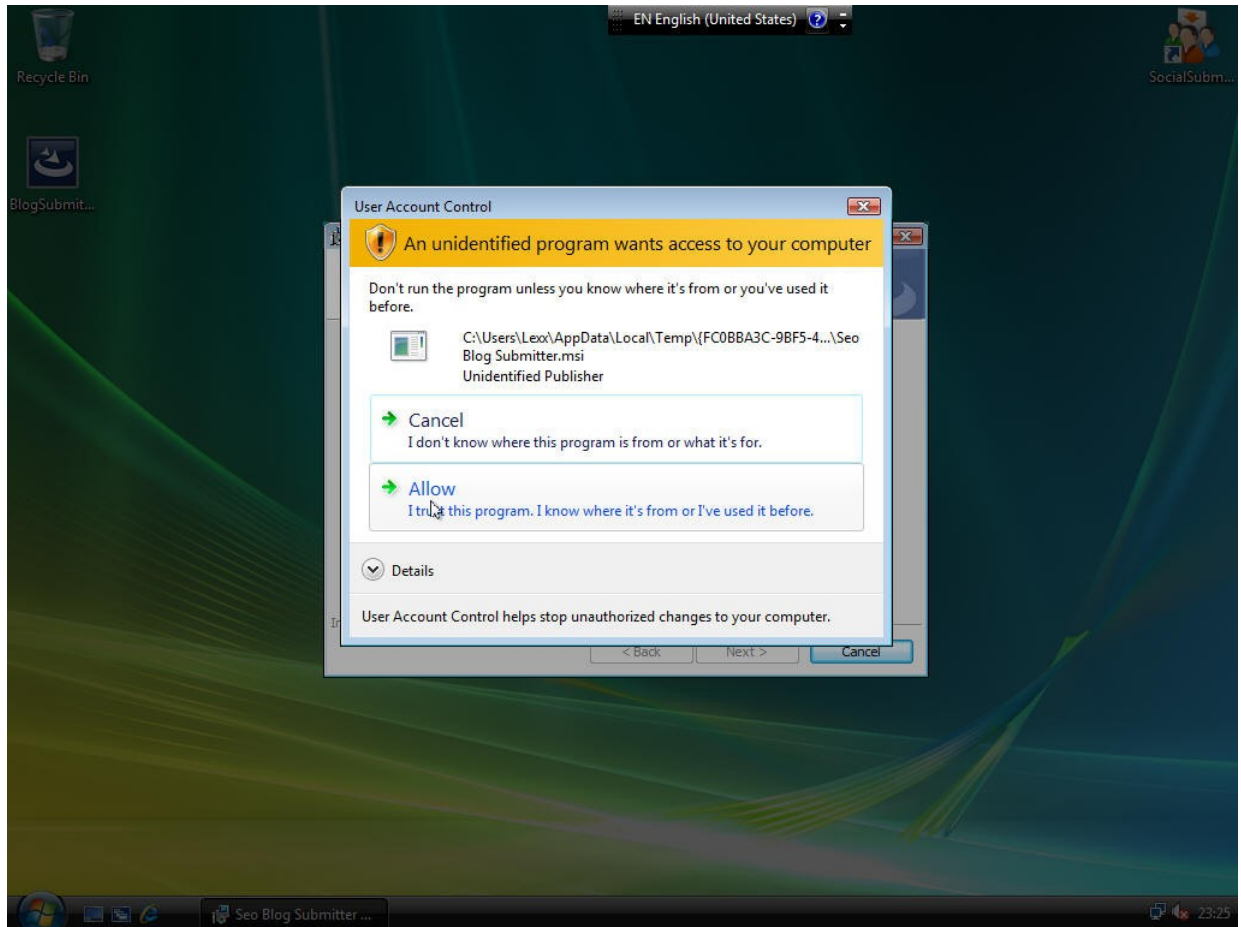


Press Next to start the installation procedure

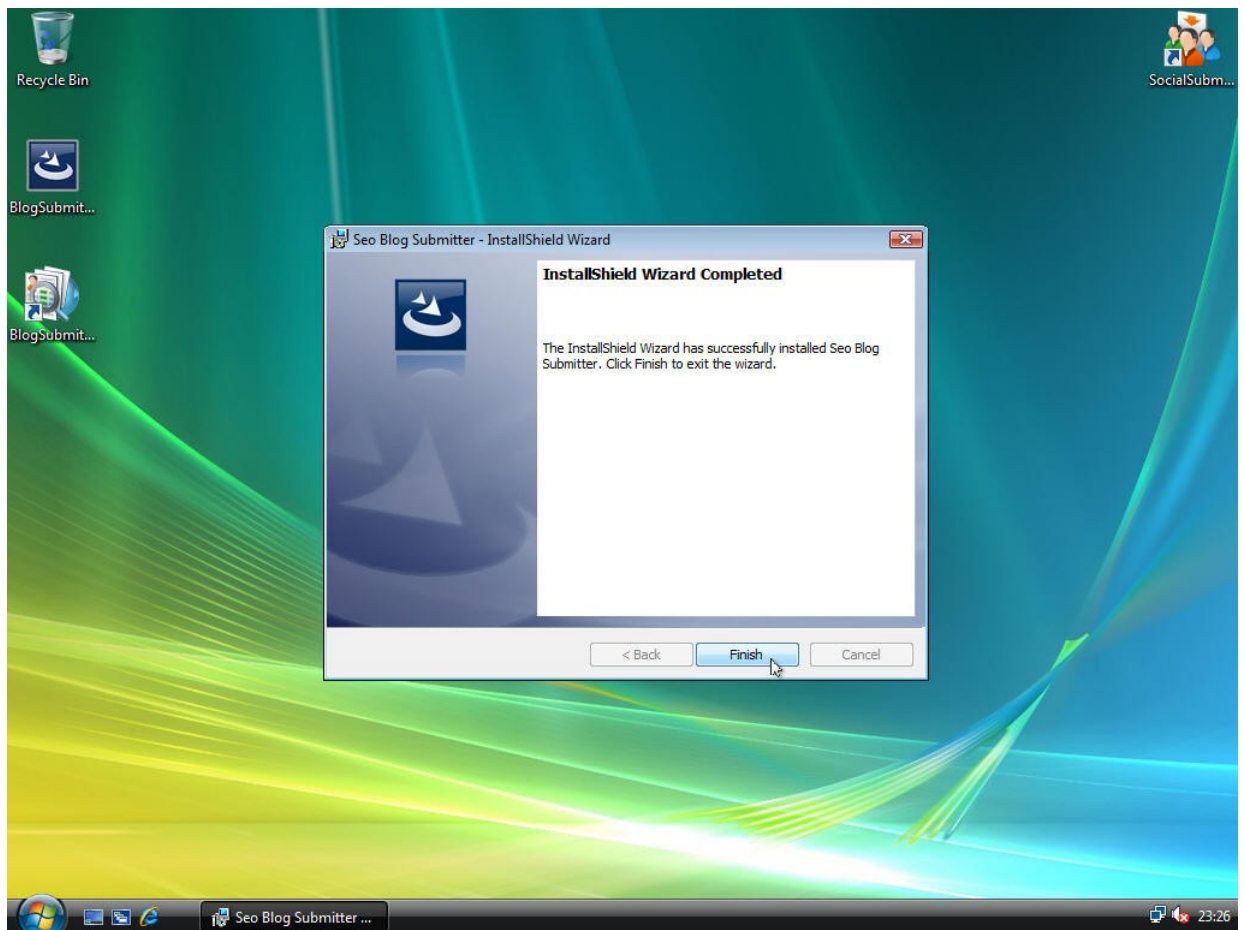


You can select the destination folder to install Blog Submitter to. By default it is C:\Program

Files\Seo Blog Submitter.



Make sure you allow the application to install in case your User Access Control or any Firewall or Antivirus protection suites ask you whether to continue the installation.

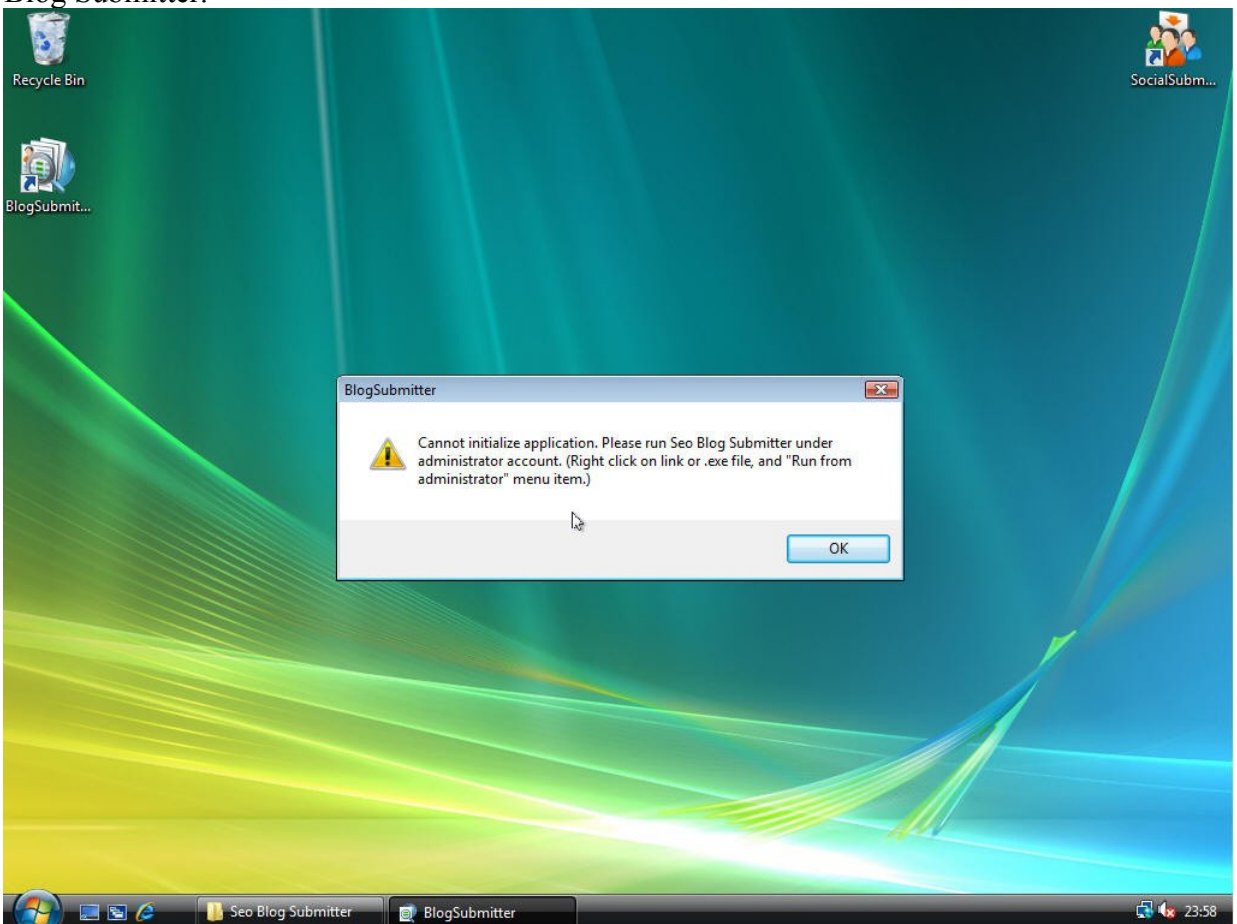


Press Finish to exit the installation. Now you have your copy of Blog Submitter installed to your computer.

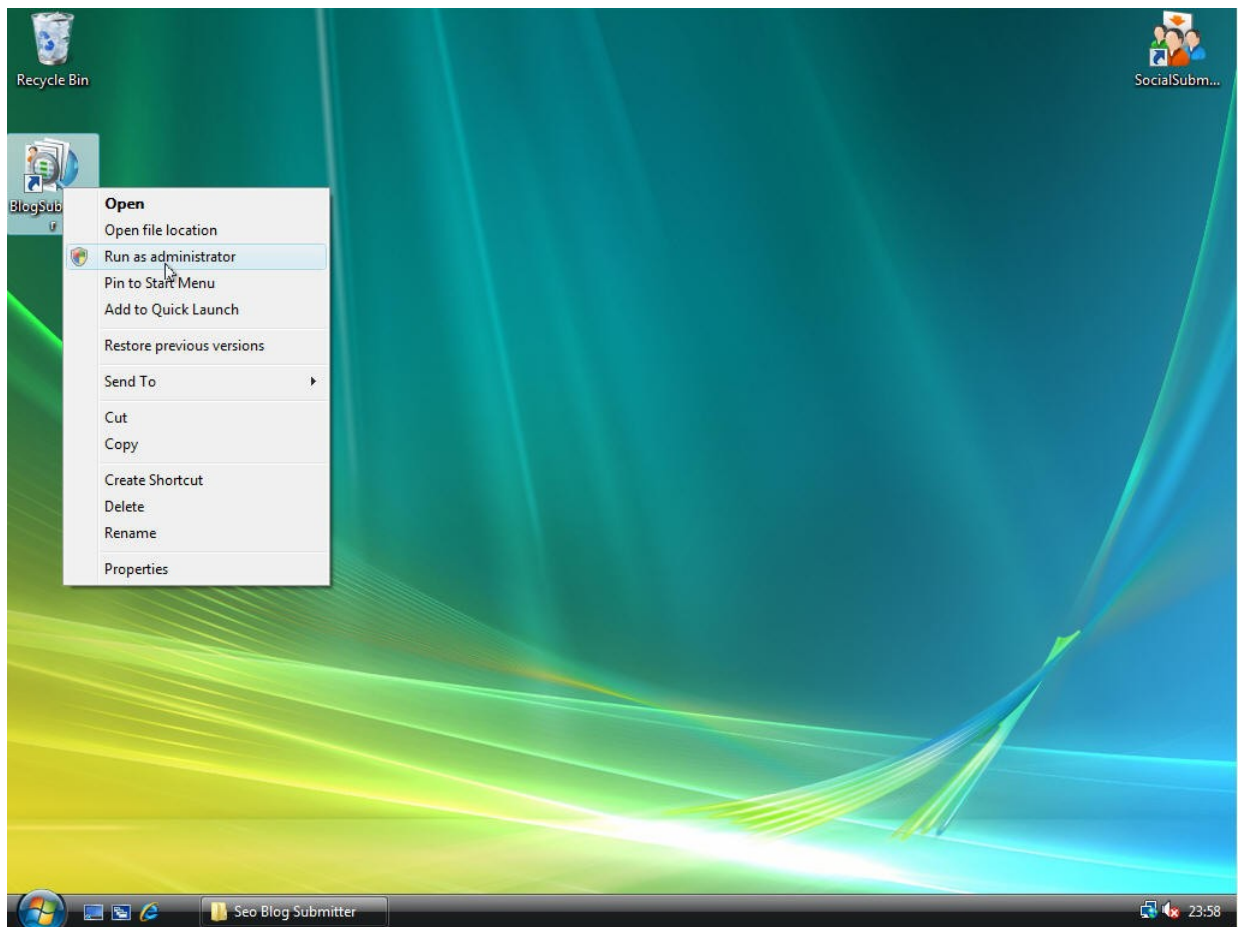
Step 2 – Registration



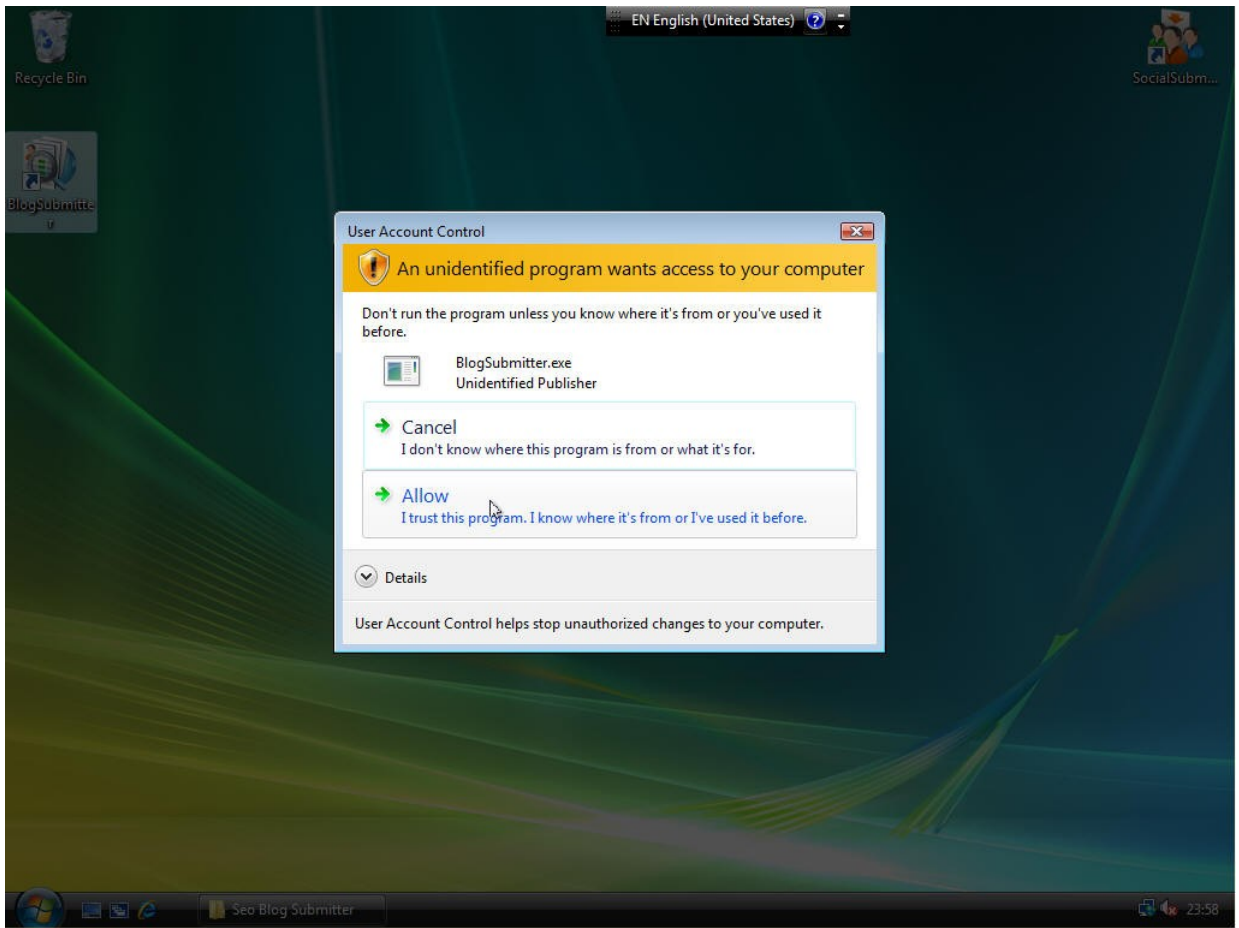
Now you are ready for the First Run of the application. Double click the desktop icon to start Blog Submitter.



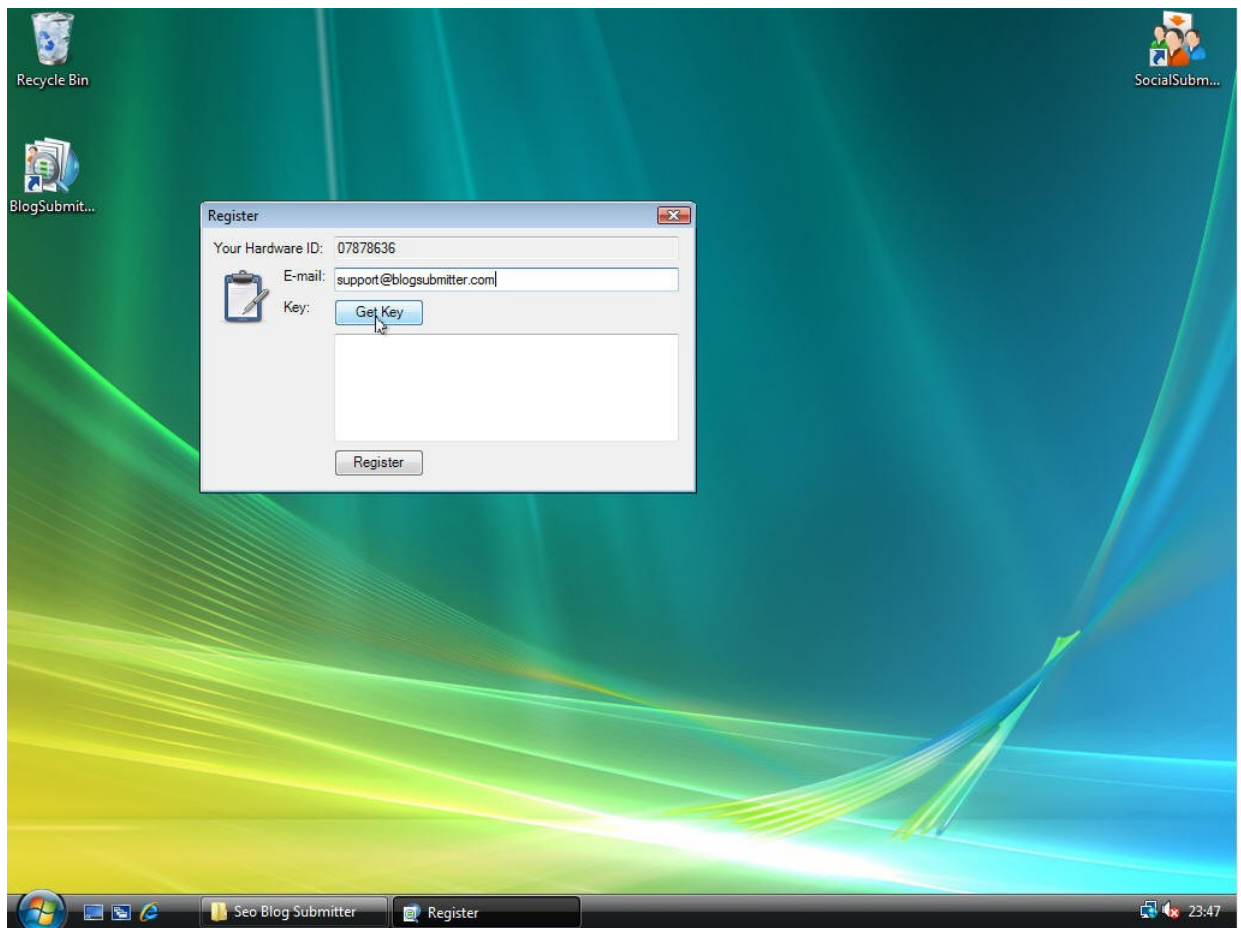
If you get “Cannot initialize” message, it means that you need to run the application as administrator.



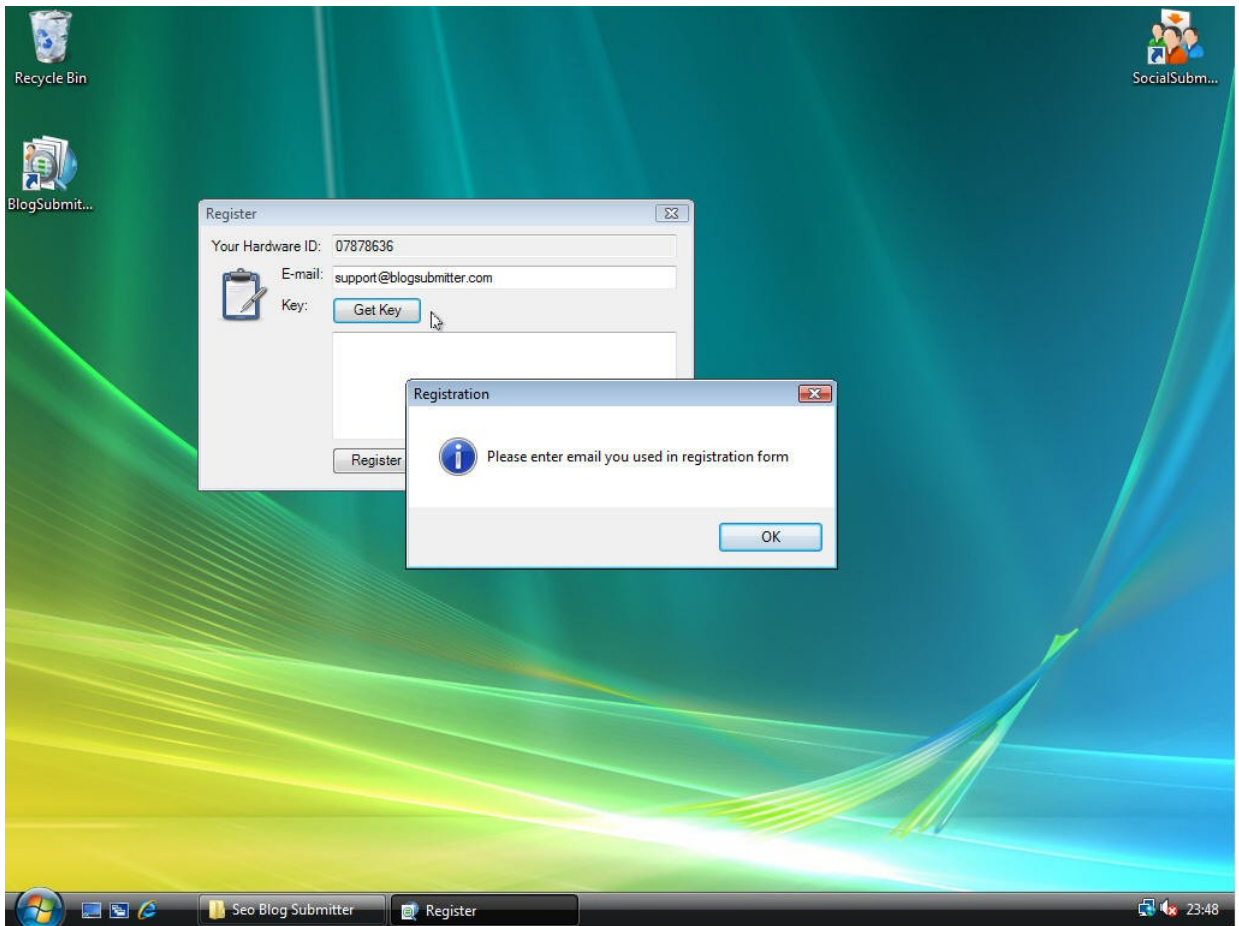
Right-click the application shortcut and select “Run as Administrator” from the drop-down menu.



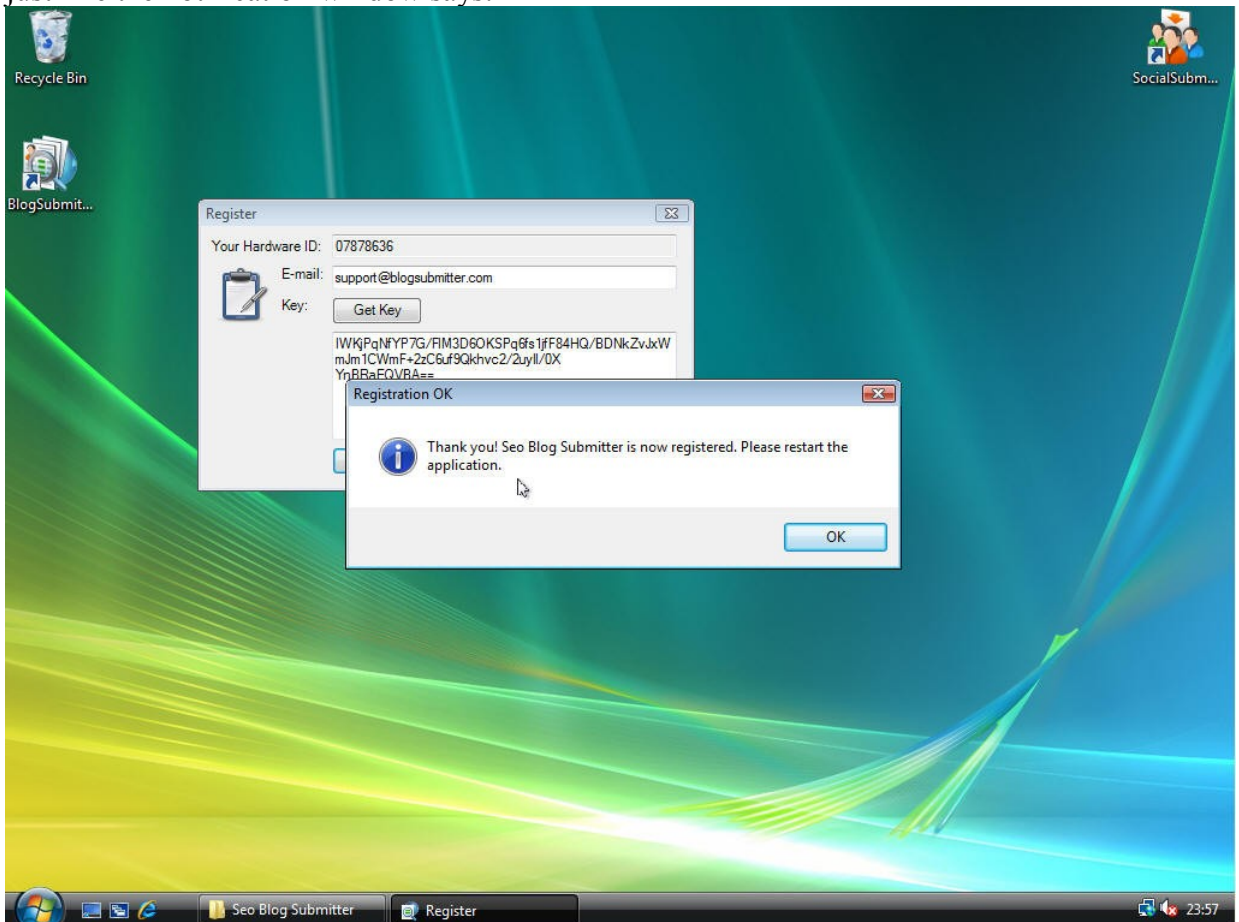
Once again, be sure to answer “Allow” to User account Control warning messages or any other Antivirus/Firewall notifications that might pop up when you start Blog Submitter.



When you start Blog Submitter for the first time, the registration screen pops up. Here you need to input the email that you used while purchasing BS. After you press Get Key button, both the email and the system generated unique Hardware ID are sent to Blog Submitter registration server. Be sure Blog Submitter is allowed to access the Internet in your Firewall or Antivirus protection suite settings.

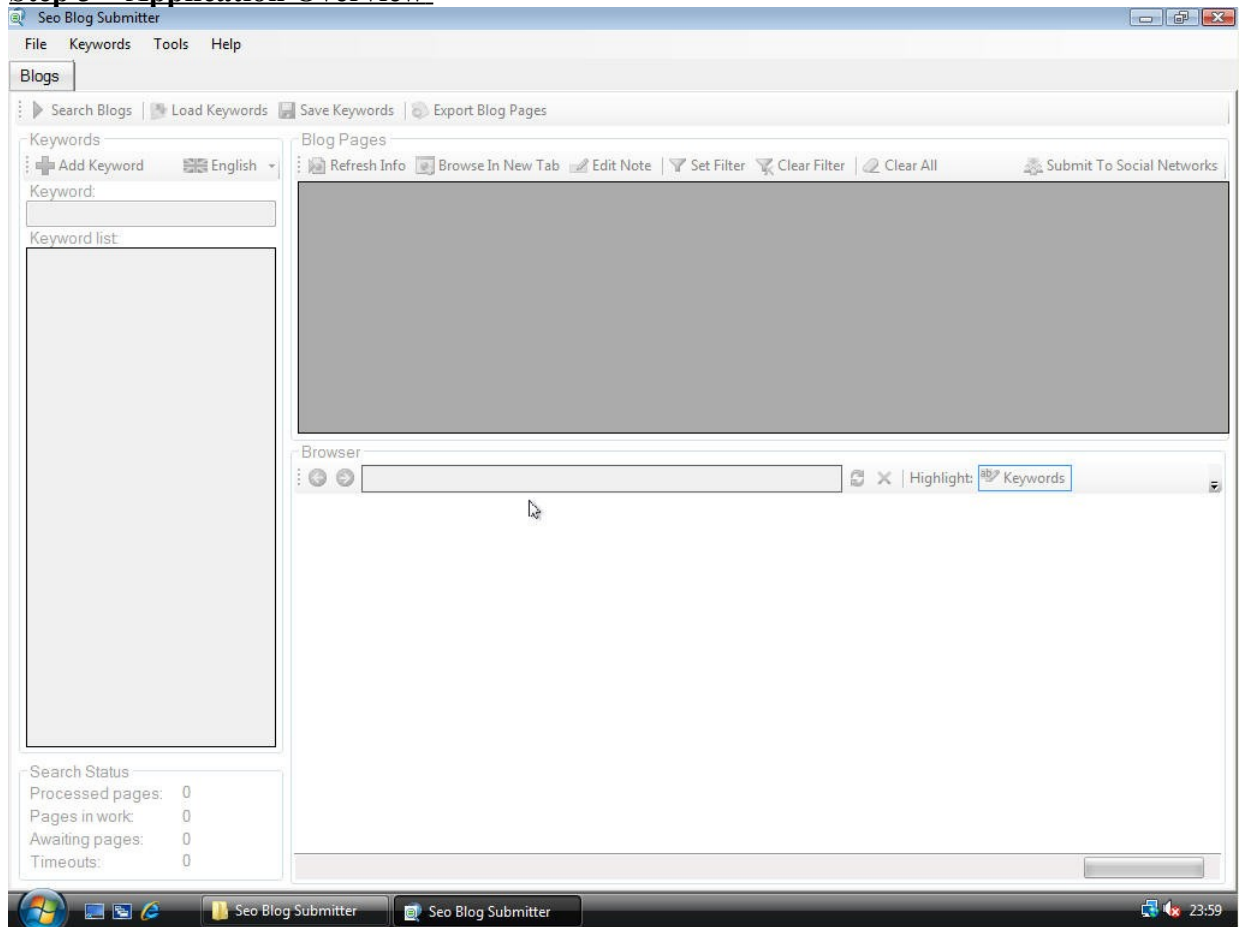


The registration key has been sent to your email at this stage, so you need to check your mailbox, just like the notification window says.



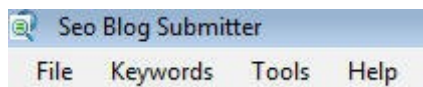
After you have received your registration key, and pasted it in the “Key” field – press Register button. Now the application is registered and you need to restart it.

Step 3 – Application Overview

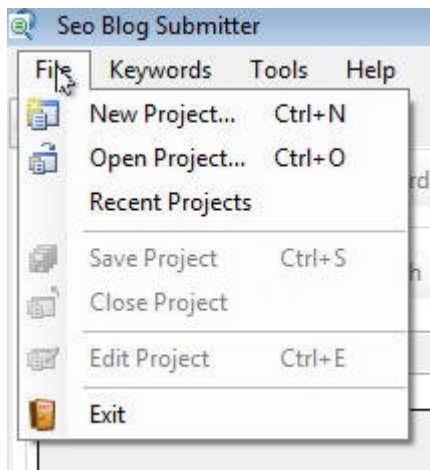


Here is the initial screen of Blog Submitter. Now let’s take a closer look at all the menus, bars and buttons and explain their purpose.

Main menu overview



Main menu consists of four buttons: File, Keywords, Tools, Help.
The sub-menus are as follows:



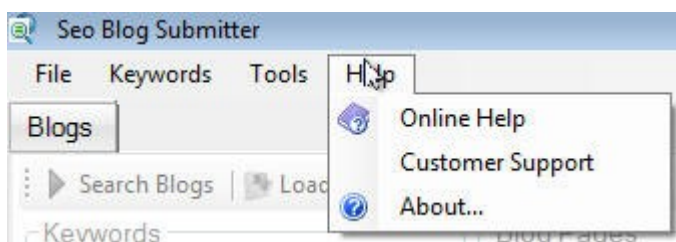
From this menu you can create new project, open the existing one, browse through recent ones, save, close or edit your project and quit the application.



From this menu you can load and save the keywords for your project.



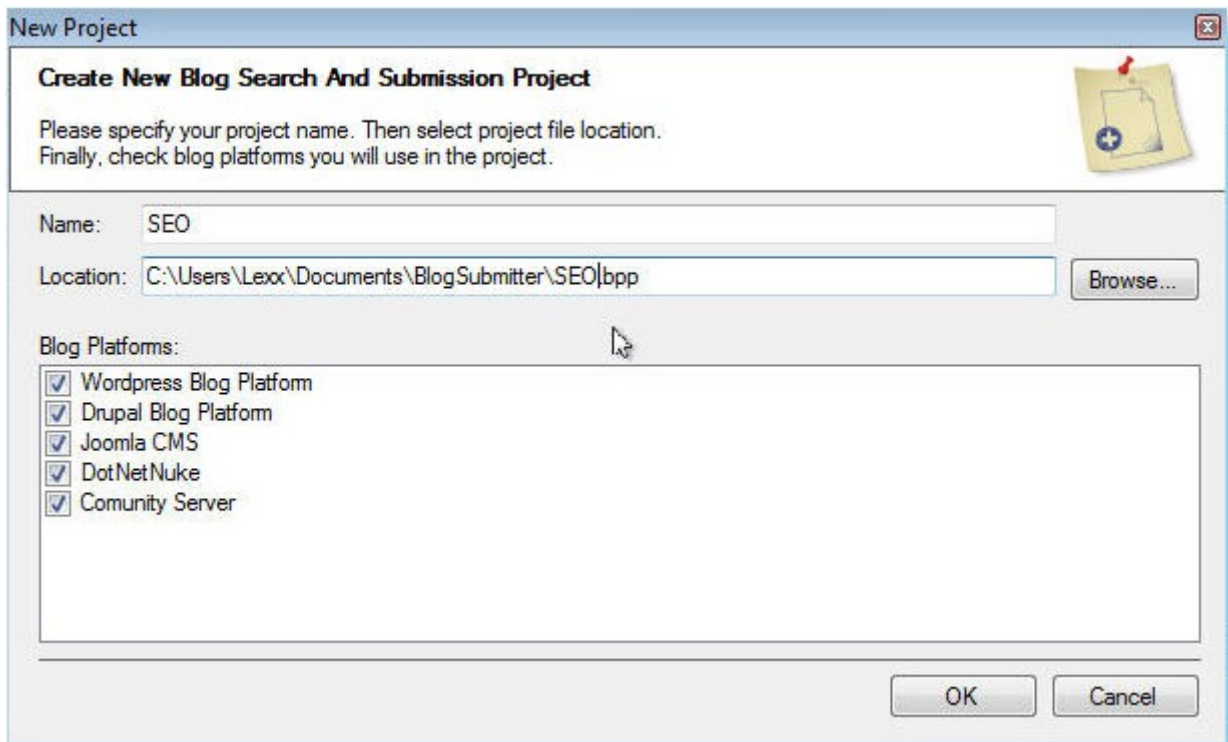
In Tools section you have Options menu and Autofill menu. Both of them will be described in details later in this help file.



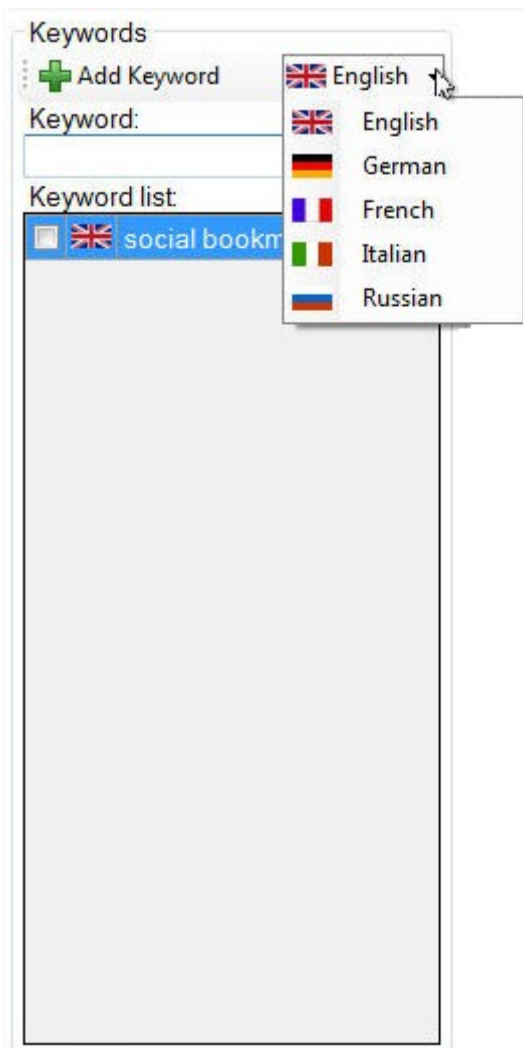
Help button: Online help (link to this document), Customer support link and program details in About section.

Search process overview

First thing you do when you start BS for the first time is create a new project.



This window pops up on pressing Ctrl+N or selecting File – New project from main menu. Here you can specify the name and location of your project file and also select the Blog Platforms you are planning to use. (In the current build only five Blog Platforms are available, but there are some major updates coming soon, so stay in touch for more features).

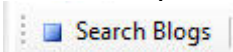


After you have created the new project, you need to specify the keywords BS will use while searching for blogs. You Select the language of the keyword, input it in the field and press “Add keyword” button. After adding several keywords you can check or uncheck the ones you will need for the current search. All the keywords are saved together with the project, which is pretty handy.



After you have picked enough keywords (you can also save them to text file or load from the one you have by using corresponding buttons in this menu), press “Search blogs” button to enable BS crawling mechanism. Now Blog Submitter will search blog pages containing selected keywords and retrieve blog information. This process might take some time depending on your internet connection, so please be patient.

You can stop this process at any time by pressing



You can monitor crawling process using this Search Status tool

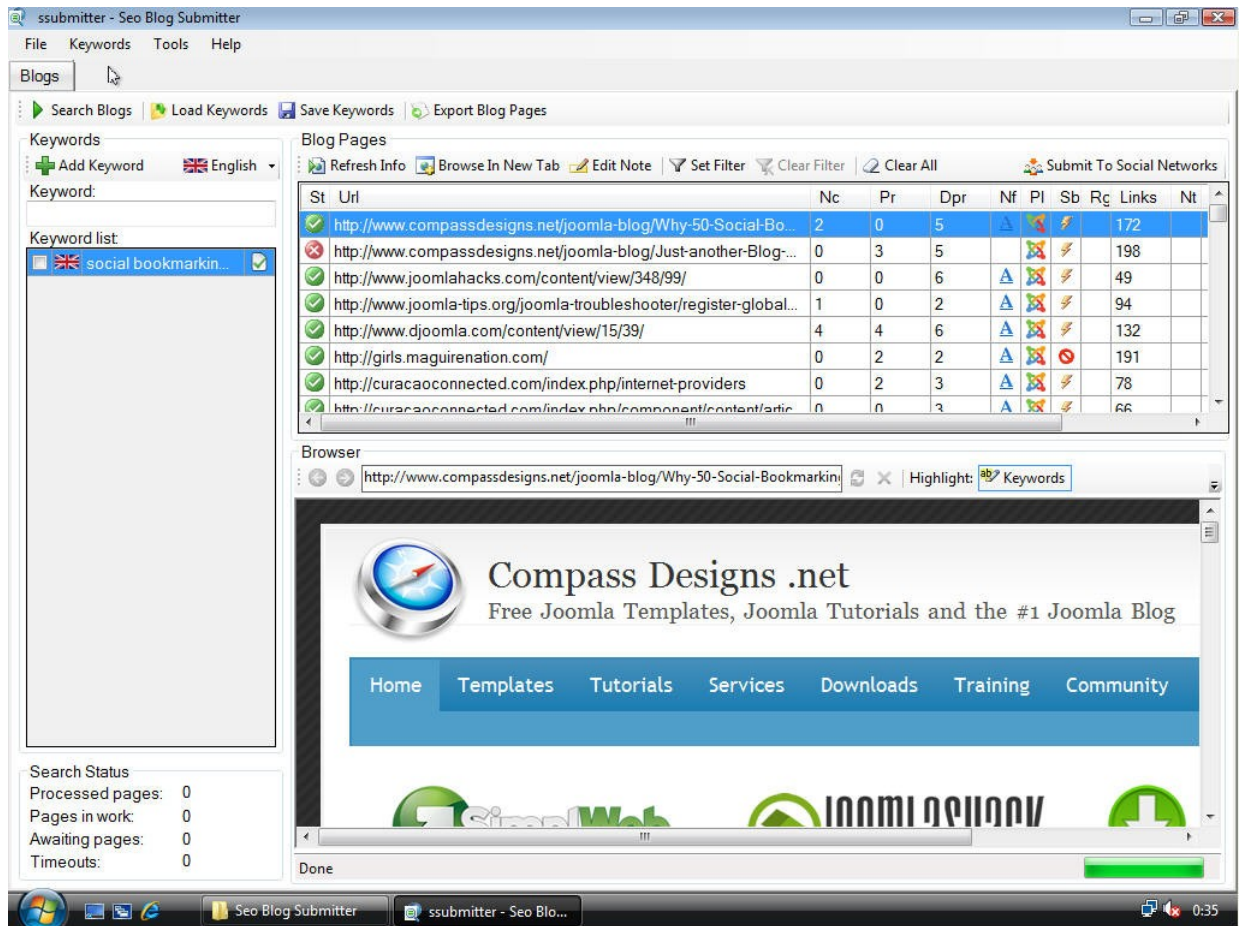
Search Status	
Processed pages:	3
Pages in work:	4
Awaiting pages:	0
Timeouts:	0

Processed pages –analyzed search results

Pages in work –search results currently processed

Awaiting pages – pages in queue for analysis

Timeouts – number of pages the system failed to parse due to timeout.

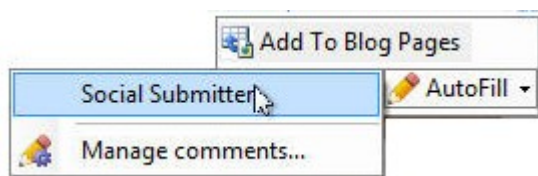


After the search has been complete, you get the result similar to this one. Let's take a closer look at all the remaining interface elements.

Browser overview



This is in integrated fully functional web-browser that allows you to navigate through the pages you have found during the search. It also allows you to highlight the Keywords and Nofollow links. In case you have browsed to another page of interest (that you might like to submit your link to) in this window, you can add it to Blog Search Results by pressing “Add to Blog Pages” button.



The browser also includes a special AutoFill form which allows you to post specific comment to the blog. (Auto-posting feature is not and will not be supported by the application. Blog Submitter is NOT a spam tool, it is a powerful system intended to increase the PR using “White” methods only).

Autofill Profiles Management

Profile: Social Submitter

Commentor Information

Name: Social Submitter

Email: mail@domain.com

Website: http://ssubmitter.com/

Comment

Title: Nice feature

Text: This is nice feature, i think it will be good for users.

OK Cancel

AutoFill tab (Also available in Tools directory of main menu) allows you to create several autofill profiles containing all the necessary information for comment submission.

Blog Pages overview

St	Url	Nc	Pr	Dpr	Nf	Pl	Sb	Rg	Links	Nt	Login	Password	Cm
✓	http://www.compassdesigns.net/joom...	2	0	5	▲	🌐	⚡		172				☐
✗	http://www.compassdesigns.net/joom...	0	3	5		🌐	⚡		198				☐
✓	http://www.joomlahacks.com/content/...	0	0	6	▲	🌐	⚡		49				☐
✓	http://www.joomla-tips.org/joomla-tro...	1	0	2	▲	🌐	⚡		94				☐
✓	http://www.djoomla.com/content/view...	4	4	6	▲	🌐	⚡		132				☐
✓	http://girls.maguirenation.com/	0	2	2	▲	🌐	⚡	🚫	191				☐
✓	http://curacaoconnected.com/index.p...	0	2	3	▲	🌐	⚡		78				☐
✓	http://curacaoconnected.com/index.p...	0	0	3	▲	🌐	⚡		66				☐

Starting from the top, let's take a look at Blog Pages Menu Bar.



Refresh info button allows you to refresh retrieved blog parameters (such as PR, number of comments, engine type etc.)

Browse in new tab opens selected blog in the new tab of the application

Edit note button allows you to create or edit existing user note about specific blog, in case you need to save some blog-specific information.

Set filter and clear filter allows you to filter blog list according to your needs (filter interface will be described further)

Clear all button allows you to clear the blog list.

Submit to social networks button sends the current blog to Social Submitter (if you have it installed in your system) and allows you to submit it to more than 200 popular social networks.

Blog search results are displayed as a grid. The grid legend is as follows:

ST – page status, having three options - Ok – all information retrieved, Error, Not yet analyzed

URL – blog page URL

NC – number of comments per page. Usually, when there is a large number of comments, chances are high that your comment will be added either

PR – PageRank for current page

DPR – domain PR. In case, for example DPR = 8 and PR = 0 chances are high that when the PageRank inside for the domain will be recalculated, the page will also receive high PageRank

NF – shows whether comments contain nofollow or dofollow links

PL – indicates blog platform of the current blog

SB – Indicates whether you can or cannot post comments to blog

RG – Indicates whether the blog requires registration for posting comments

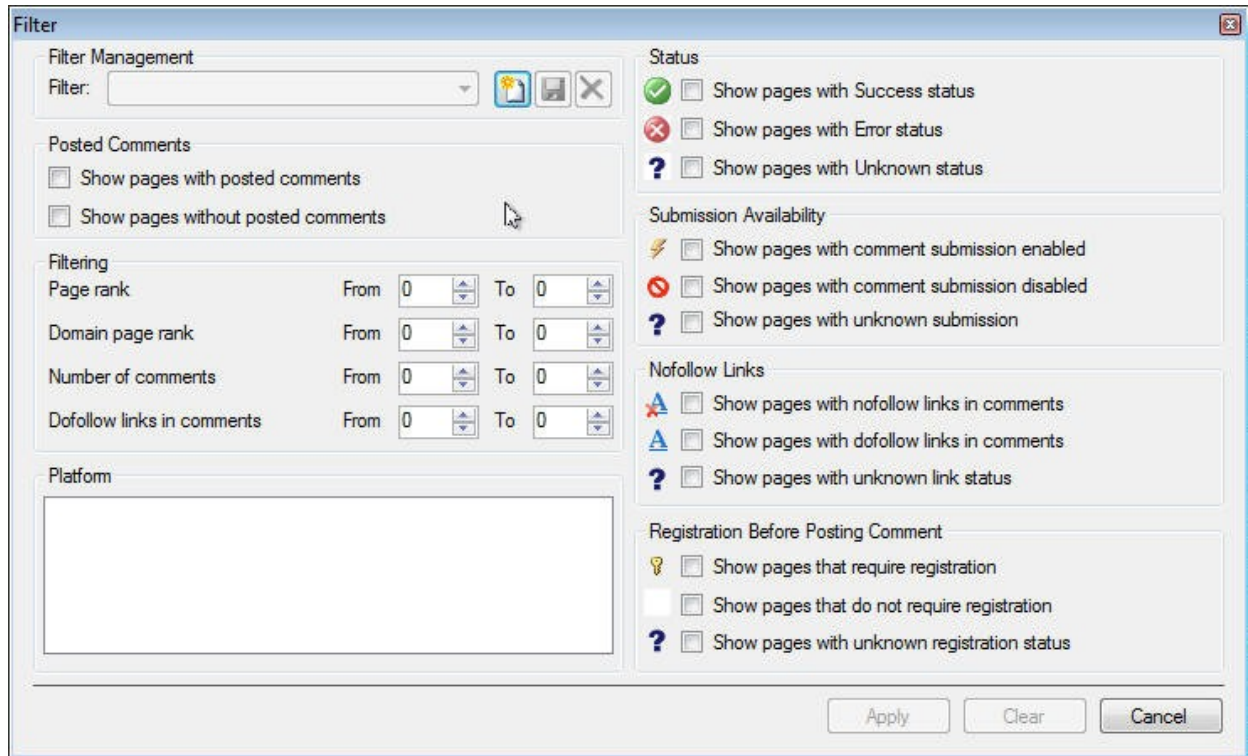
Links – Overall number of links per blog page – if the number is big, this usually means that the blog page is full of spam

NT – Indicates whether you have created a note for the blog (you can edit it by pressing Edit Note button in the menu)

Login and Password are the fields where you can store logins and passwords for blog pages you have registered in. In case there are several blog pages located at one domain, if you input the data for one of them, the BlogSubmitter will automatically copy the data for all the pages inside one domain.

CM – Flag this checkbox when you leave a comment. This will allow you to track your comments easily in the future.

Filter overview.



In this window you can create, edit or remove filters. BlogSubmitter doesn't have any pre-defined filters.

Posted comments – here you can select whether BS will show pages you have posted comments to, pages you haven't posted the comments to, both or none of these. Be sure to flag CM checkbox for this option to function properly.

In filtering you can select your desired values of PR, DPR, NC and Link fields.

Platform – pick only blogs created at a specific platform.

Status – select pages with specific status that you want to display in search results.

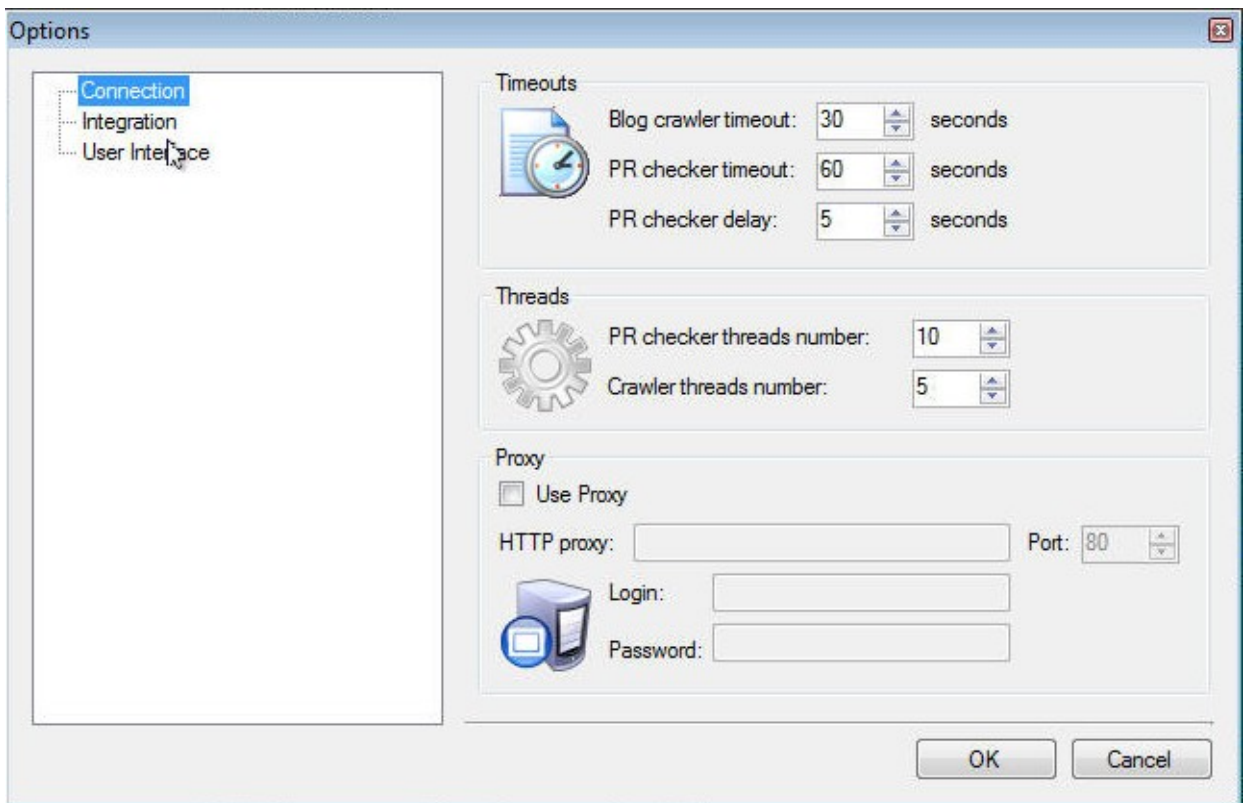
Submission availability – as follows from the title, display pages with certain value of submission availability

Nofollow links – select pages with a specific type of links

Registration before posting – select pages that require or do not require registration, or pages with unknown status.

Options menu overview.

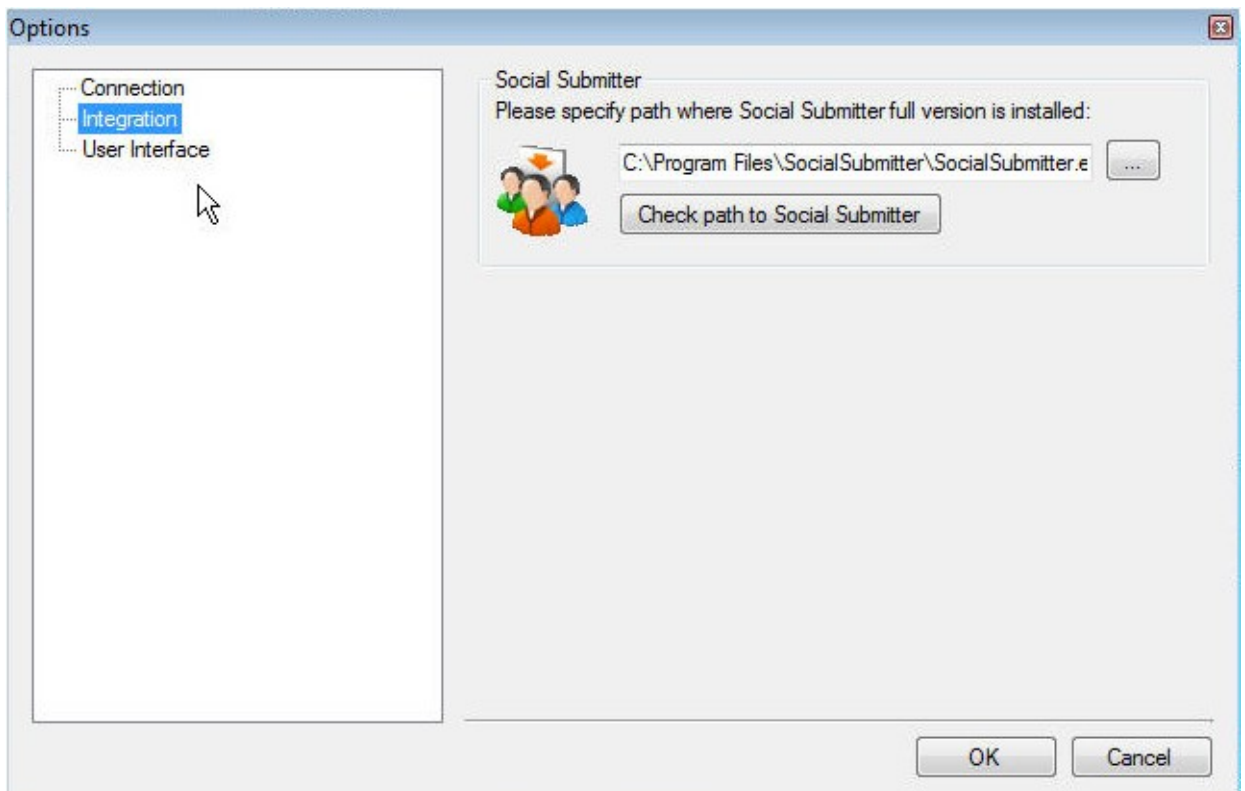
Options menu has three tabs:



Connection tab allows you to set specific timeout settings for blog crawler and PR checker – it might be useful to increase these values in case you receive too many Errors in Blog Page Status (ST).

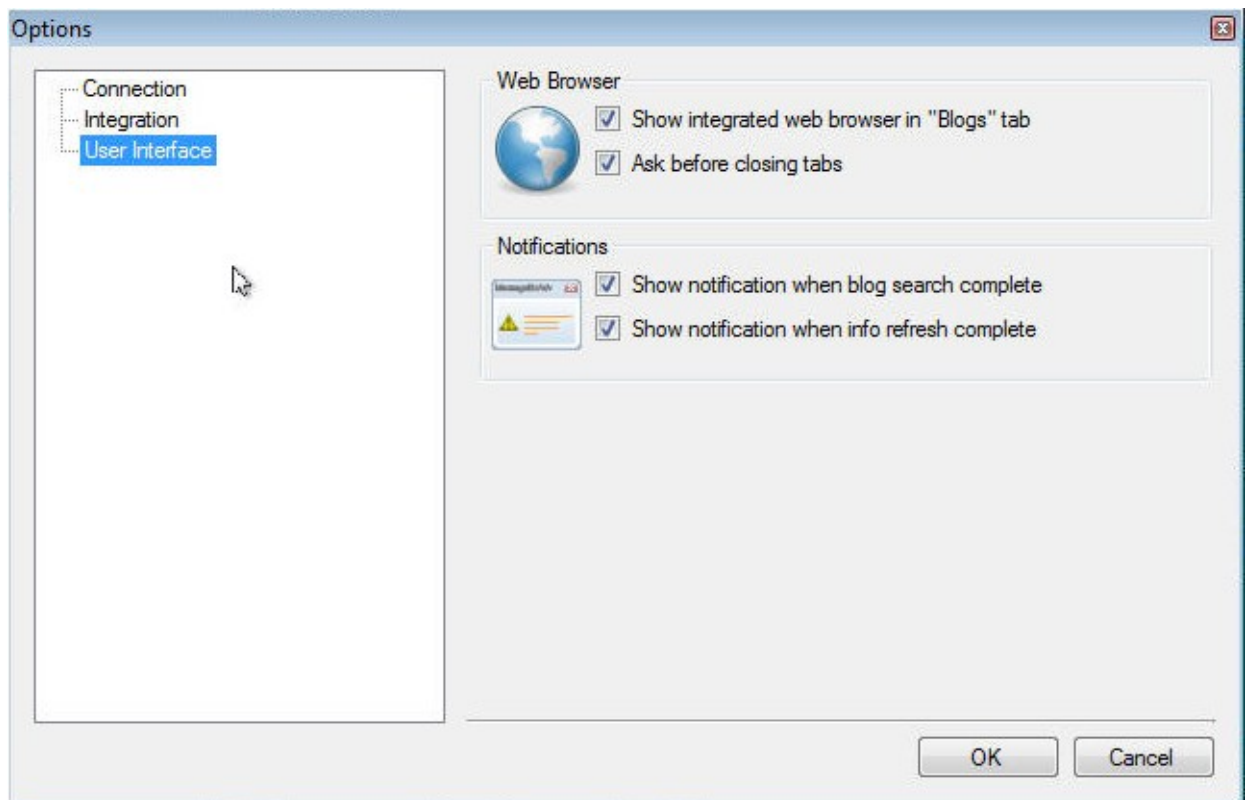
Here you can also set up the number of threads for the Crawler and PR checker – decrease these if you have unstable or slow Internet connection.

If you need to use proxy, you also have the interface that allows you to do so in the bottom of the tab.



Integration tab allows you to integrate Blog Submitter with Social Submitter (in case you have it

installed). This gives you an opportunity to submit the blog page you liked to up to 200 popular social networks, which might even more increase your PageRank.



User interface tab allows you to select whether or not will Blog Submitter show integrated Web browser in “Blogs” tab, and will the application ask before closing browser tabs. It also allows you to enable/disable notifications during blog search and information retrieve.